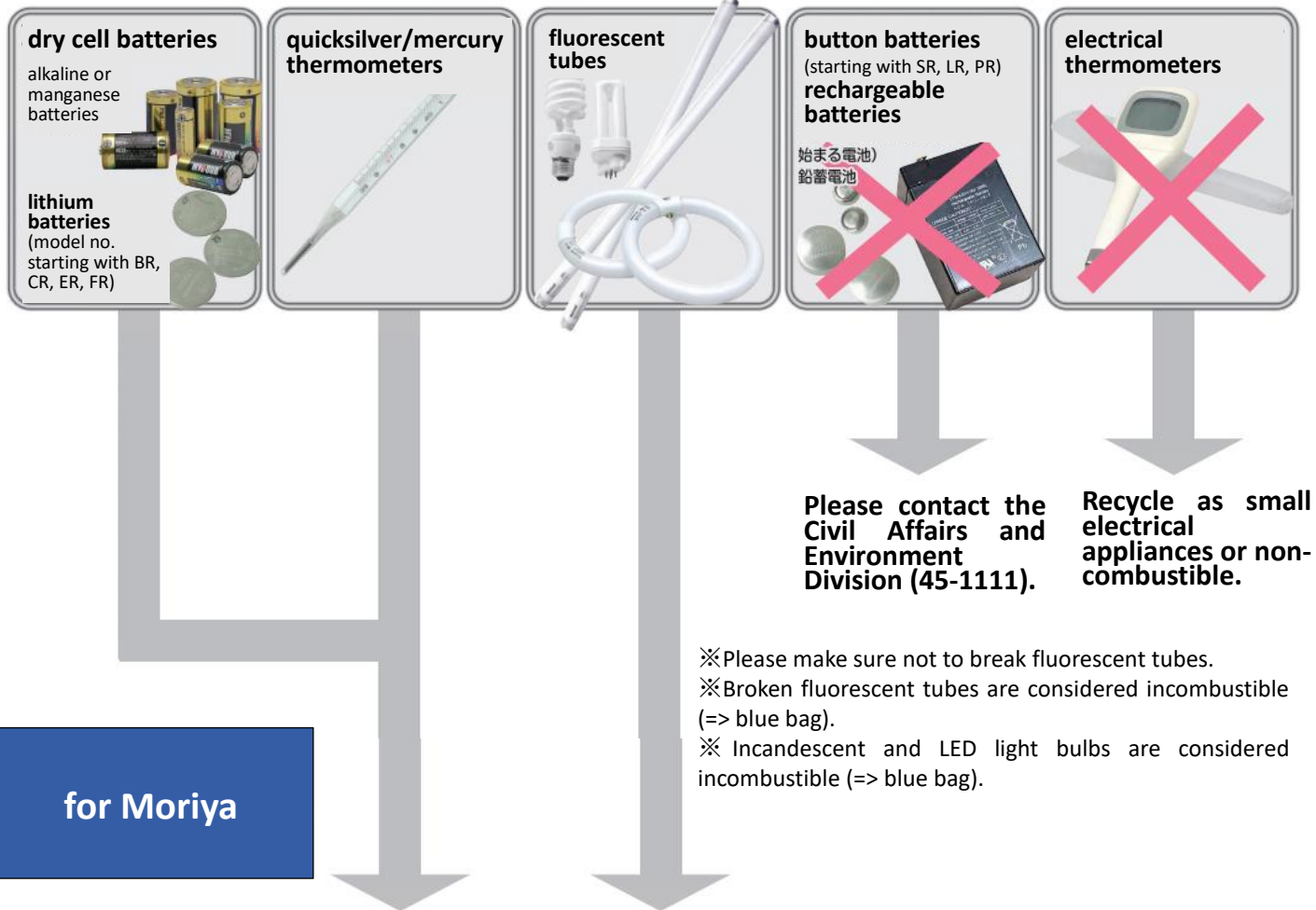


Hazardous waste



Please dispose of dry cell batteries and mercury thermometers in the collection box below.

You can find these at the following places:

- City Hall
- Community Centers (Kōya, Kita-Moriya, Chuo)
- Health Center
- Cultural Center

Please dispose of fluorescent tubes in the box below.

You can find these at the following places:

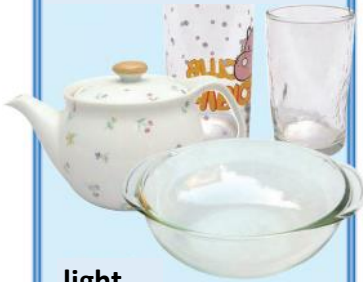
- City Hall
- Community Centers (Kōya, Kita-Moriya, Chuo)
- Health Center
- Cultural Center

If you have more questions regarding garbage disposal, please contact the Moriya Civil Affairs and Environment Division (45-1111).

Incombustible (non-burnable) garbage

breakables

toiletries, ceramics, glass dishes, heat resistant glass



light bulbs



leather and rubber

boots, shoes, bags



umbrellas



items made of plastic



toys, CDs, plastic dishes, ballpens, hangers, tooth brushes, lighters, small bins, plastic flower pots

other items



drink pack straws, plastic spoons and forks, washing powder scoops

small electrical appliances

toasters, hair dryers and others that fit into the designated bags



blades

razors, knives



Please wrap these in paper before throwing them out.

Please dispose of beverage bottles as recyclable glass.

Stained plastic containers are also incombustible garbage (however, please try to clean them if possible so they can be recycled => green bag).

Please don't forget to dispose of PET bottles as recyclable garbage (=> green bag).

Make sure lighters are fully emptied before throwing out!

Please wrap blades in paper

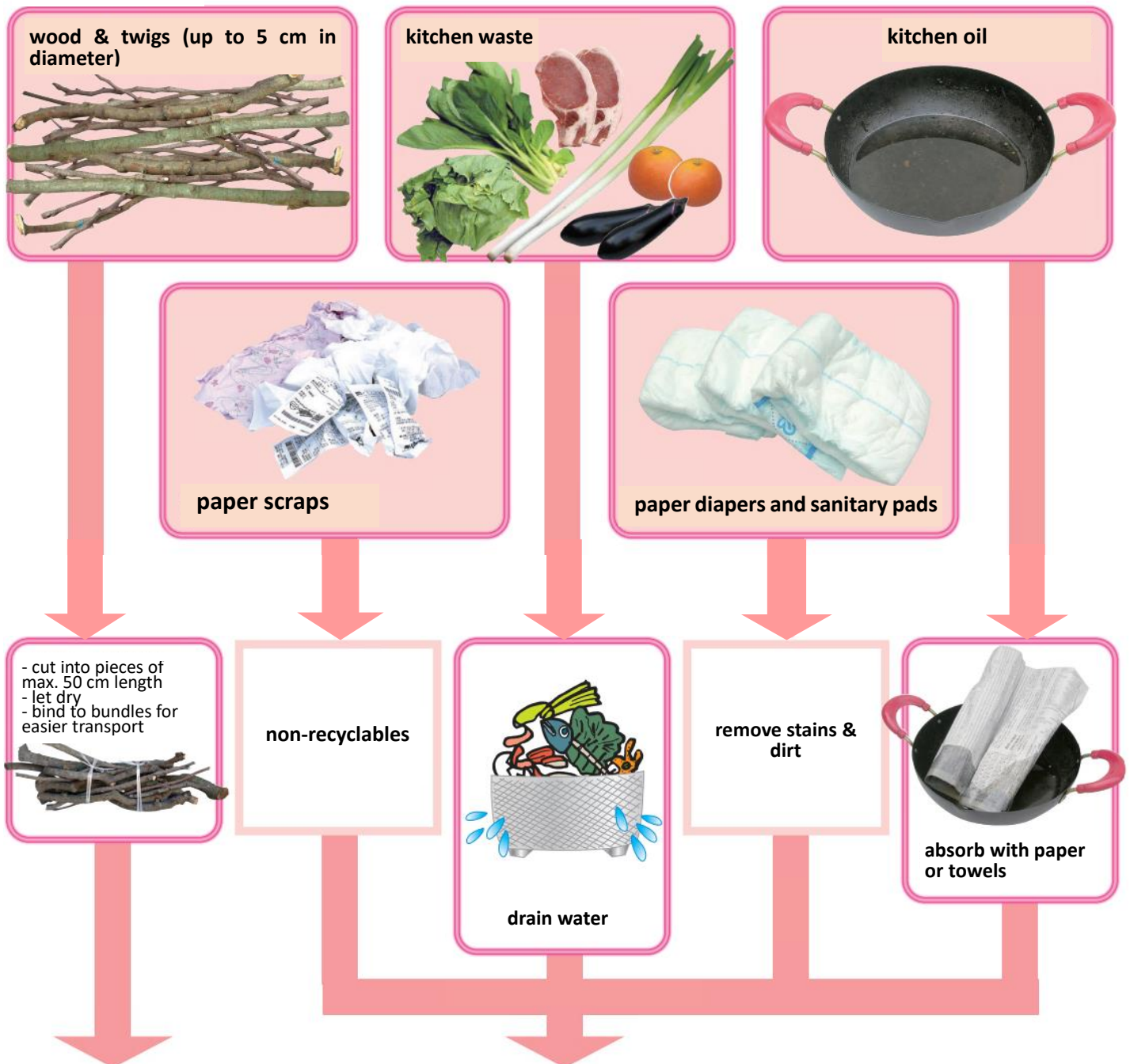


size:
big 45 l
small 10 l

○Please use the designated garbage bags (except for wood and twigs).

○Place in the designated area before 8 AM on the day of garbage collection.

Combustible (burnable) garbage



○ Please use the designated garbage bags (except for wood and twigs).

○ Place in the designated area before 8 AM on the day of garbage collection.

Old clothes and fabric

(for Moriya)

old clothes



Old clothes will be reused as they are so please only dispose of wearable clothes.

Some clothes like uniforms with firm or school logos cannot be recycled. Please ask the City Hall for more information.

old fabrics



Old fabrics will be recycled for industrial use. They will be turned back into cotton and re woven into new fabrics. Please only dispose of sheets and towels that are of 100% natural material.

not disposable



futons
pillows
stuffed toys

Depending on the size and materials, please dispose of as bulk or non-burnable garbage.

Step 1: Tie up with a string.

Step 2: Put into clear bag and place in the designated area on the day of garbage collection.

※ Since fabrics stained by rain cannot be recycled, please make sure to put them into transparent plastic bags.

plastic bags



その他の透明袋



Green (recyclables) and blue (non-burnable) bags can be used for this. Please do not use the red (burnable) bags as they are only half transparent.

Please cross out the words 不燃ごみ (blue bag) or 資源物 (green bag) as shown above.
If you can, instead please write 布類 on the bags.

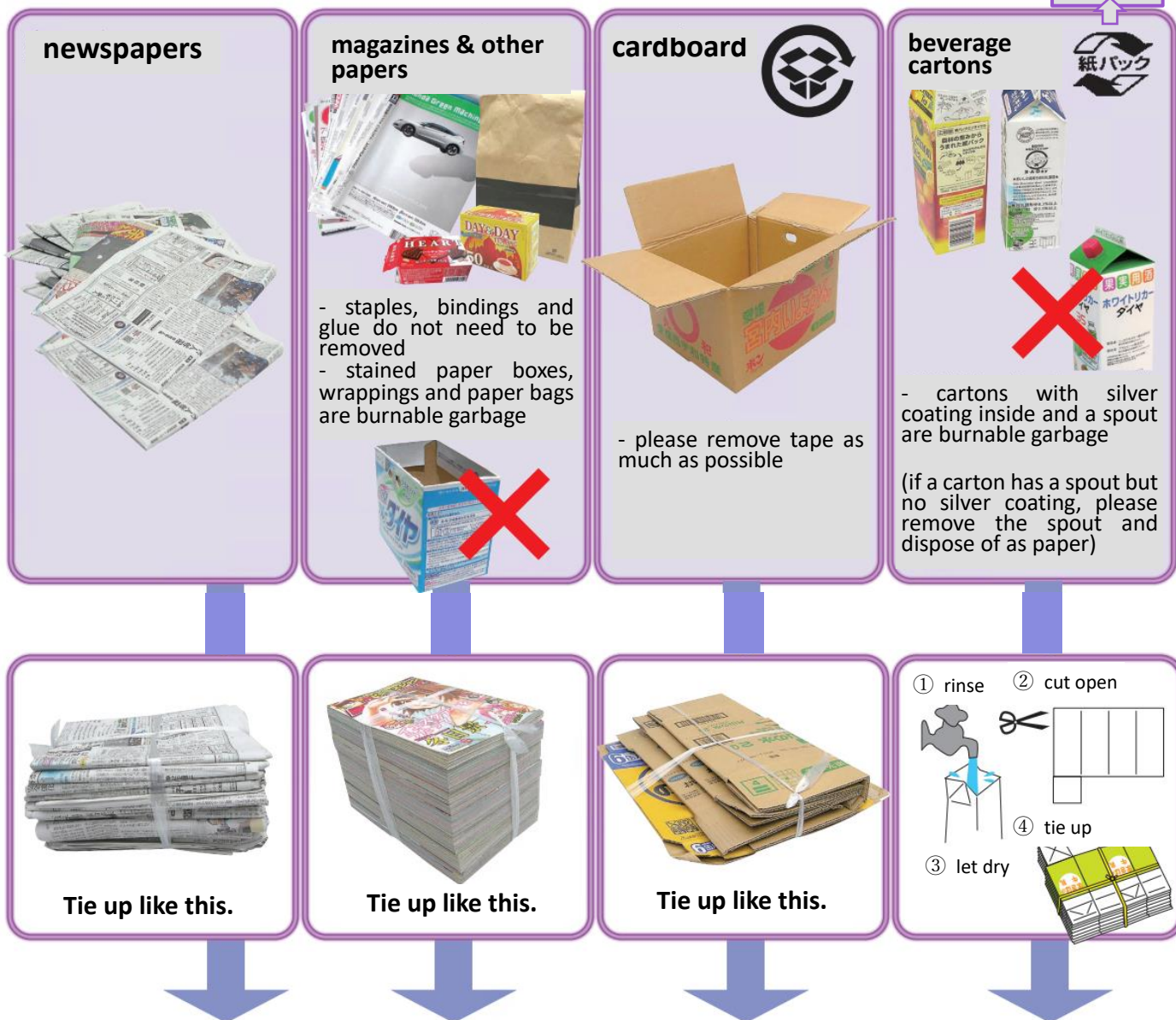
How will old clothes and fabrics be recycled?



- exported to other countries as second-hand clothes
- recycled for industrial use
- turned back into cotton for new fabrics

Paper

Please dispose of stained paper as burnable trash.



- Place in the designated area before 8 AM on the day of garbage collection.
- Please do not use rubber bands or masking tape for tying up.

Garbage collection may vary by city. Please contact the city office for further questions.

These are not disposed of as waste paper:

window envelopes, paper cups, fax (thermal) paper, photographs, water-proof paper, wax coated paper, oil paper, carbon paper, carbonless copy paper

Please do not mix these with waste paper:

plastic tape, adhesive tape, metal clips, cellophane, Styrofoam, plastics, glass, cloth/fabrics



Empty glass bottles

To be separated by color (clear, brown and other colors)

clear



brown



other colors



If the color is hard to define...

- light colors

check bottom



=> others

- frosted glass

check opening



=> clear

- coated glass

check opening



=> clear

① Remove cap.

Plastic caps => plastic
Metal caps => cans

② Rinse inside.

※Applies only to bottles that were used for food products.
※No need to remove labels.

Please dispose the following as non-burnable

heat resistant glass



ceramics



toiletries



dishes



sheet glass



medicine & pesticides



Danger!

Do not dispose of bottles which still contain medicine/pesticides.

rip off

take off

leave on

clear bottles



blue container

brown bottles



brown container

other colors



green container

- Please **do not** put anything else but empty bottles in the containers.

- Please separate the bottles into the **three colors**.

- Please place the bottles **sideways**.

- Please **take home** the bag/container in which you carried the bottles.

- Please put them into the containers **until 8 AM** on the designated pick-up date.

Returnable glass bottles (e.g. beer bottles) should be brought back to the shop they were bought from.

< The containers are plastic boxes with the dimensions 60x40x30 cm. >

Empty cans

drinks



tinned food cans



spray cans
gas cartridges



pots, kettles, frying pans



metal caps

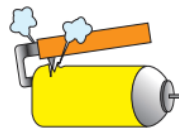


other cans



- Please rinse.
- There is no need to separate steel and aluminum cans.
- There is no need to crush cans.

- Empty completely.
- Punch a hole.



- Please use special tools from a DIY shop.
- Protect your face and clothes.
- Use outdoors in a ventilated and fire-proof space.
- Please remove cap or nozzle (=> plastic).

- Make sure they are completely empty.

circle



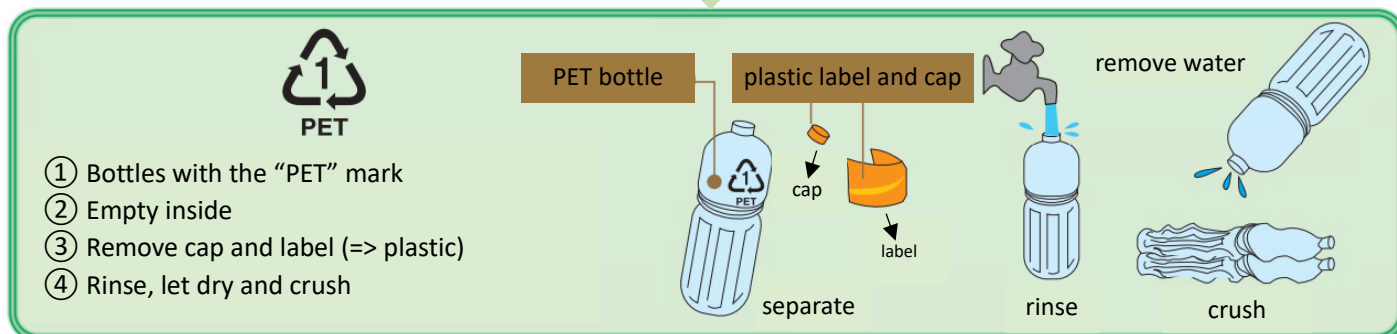
size:
big 45 l
small 10 l

○ Please use the designated garbage bags.

○ Place in the designated area before 8 AM on the day of garbage collection.

PET bottles

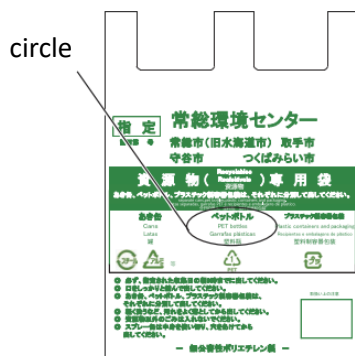
Do not dispose of other PET containers as “PET bottles” other than the examples below.



These are not PET bottles.

※ If you cannot clean them, dispose as non-burnable. If clean, as plastics.

- × oil bottles
- × sauce bottles
- × detergent bottles
- × shampoo bottles



○Please use the designated garbage bags.

○Place in the designated area before 8 AM on the day of garbage collection.

Plastic packaging and plastic containers

Plastics are packaging, wrappings and containers made of plastics.



① check for “プラ” mark



② empty container and wipe or rinse and dry



③ circle “plastic containers” on bag



Please do not wrap plastic containers in shopping bags.



※Containers that cannot be cleaned are “non-burnable”.



If you manage to clean them, you can dispose of them as recyclable material.



If hard to clean, soaking in water might help.



It's easier to clean tubes if you cut them open.

※ Please dispose of PET bottles separately.
※ Tooth brushes, buckets etc. are “non-burnable”.